

# elevate<sup>TM</sup>

*Construction Made Easy*

A MANAGEMENT SOFTWARE SOLUTION

"We cannot solve our problems with the same thinking  
we used when we created them"

*A Einstein*

MEMBER OF THE CHARTERED INSTITUTE OF BUILDING



## ELEVATE AT A GLANCE

	Investor	Client	Com & PQS Co-ordinator	Full Design Team	Principle Contractor	Sub- Contractor	Health & Safety	Enviroment / Sustainability
Set-up of Contract		✓	✓	✓	✓	✓		
Real time overview of project	✓	✓	✓	✓	✓	✓	✓	
Coloured priority direction of next process		✓	✓	✓	✓	✓		
Real time cash flow forecasts	✓	✓			✓	✓		
Automated administration of contracts	✓	✓	✓	✓	✓	✓	✓	
Paperless system		✓			✓	✓		✓
Automated variation administration to project	✓	✓		✓	✓	✓		
Health & Safety semi-automated			✓		✓	✓	✓	
Travel & Telephone costs reduced	✓	✓	✓	✓	✓	✓		✓
Reduction in snagging / defects		✓			✓	✓		
Damage works fully recoverable		✓			✓	✓		
Automated valuations	✓	✓			✓	✓		
Automated programmes & programe updates		✓	✓	✓	✓	✓		
Compliant contractual administration, including new NEC 3	✓	✓			✓	✓		
Internal & external audits created	✓	✓			✓	✓		
Full Secure storage of all data		✓	✓	✓	✓	✓		
Extensive Security of data input	✓	✓		✓	✓	✓		
Automated Protection against incorrect data input (Office)	✓	✓	✓	✓	✓	✓	✓	
Protection against incorrect data input (Field Level)	✓	✓			✓	✓		
Change of Supply Chain after project has started					✓	✓		
Works for All projects	✓	✓	✓	✓	✓	✓	✓	✓
Carbon Foot Print of Project reduced	✓	✓						✓
Vast reduction in stress in the work place		✓	✓	✓	✓	✓	✓	
Risk virtually eliminated	✓	✓	✓	✓	✓	✓		

"It's not a question of how well each process works, the question is how well they all work together"

*Lloyd Dobyns and Clare Crawford-Mason*

### ELEVATES MOTO IS 'CONSTRUCTION MADE EASY'

With over 34 years' experience within the construction industry and fully understanding the complexities involved in administrating and completing projects.

Steve McGowan MCIOB designed Elevate to be simple, user friendly and at the same time direct and produce all the documents and information required to manage a project from the start through to completion, and send this information automatically.

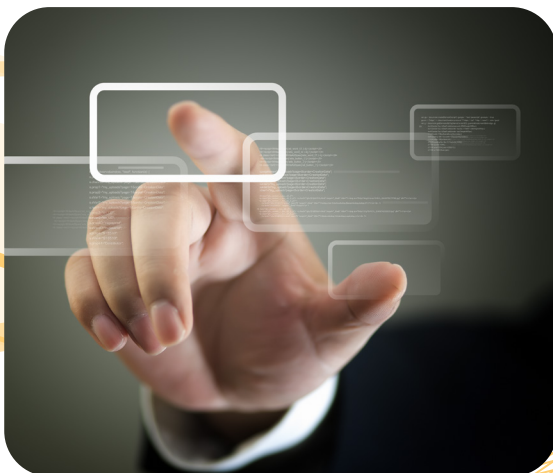
In addition the system had to have the ability to be a standalone system, with no need for complex and expensive integration costs into a company's structures or other applications, which would give the end user a choice and flexibility that may be required, but at the same time, training to use the system had to be self-explanatory, and based within the system.

The Elevate system had to be compatible to all - not just the main contractor - but where each individual sector including the sub-contractor could also use the system on their own if required.

With the above said, elevate was born and has achieved all its goals and many more.

The system directs everyone smoothly and efficiently all at the simple 'click' of a button. It doesn't matter how large or small your organisation is or whether it is contractual or non-contractual, Elevate works for all. It guides everyone simply but efficiently and removes stress from the work place.

### INVESTOR - CLIENT - DESIGN - FINANCE - CONSTRUCTION PHASE



Elevate is the only software that links all the different sectors together and manages them in detail.

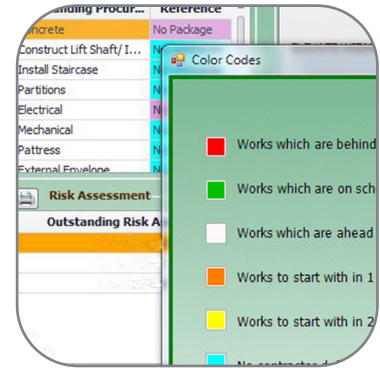
Elevate directs everyone and truly understands the complexities of Industry and the end user requirements which has now been turned into a simple 'Click'

*"Every moment is a golden one for him who has the vision to recognise it as such"*  
**Henry Miller**

## STAFFING BENEFITS

ELEVATE HAS A UNIQUE COLOUR CODING IN ORDER OF PRIORITY FOR THE FULL TEAM WHICH INCLUDES:

- **CLIENT**
- **DESIGN**
- **FINANCE**
- **CONSTRUCTION TEAM**
- **HEALTH AND SAFETY**



All are guided through the project with colour coding showing each sector the next process to be undertaken and completed. All are linked to the overall construction programme. Making works stress free and very efficient, and culminating in a true dot to dot project management system.



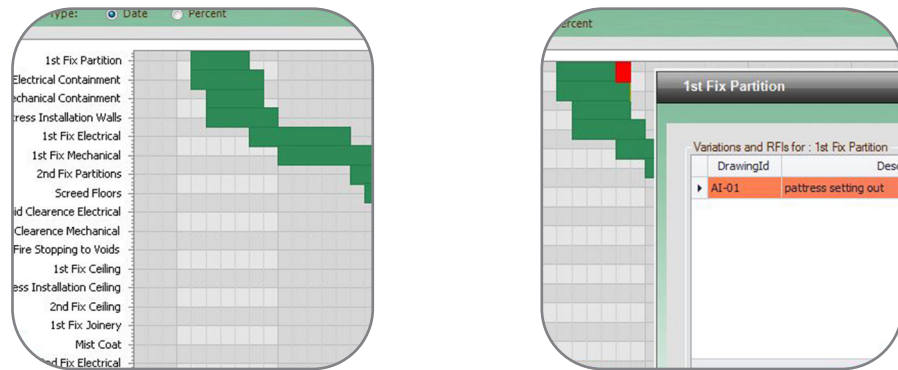
"No matter how good the team or how efficient the methodology, if we're not solving the right problem, the project fails"

*Woody Williams*

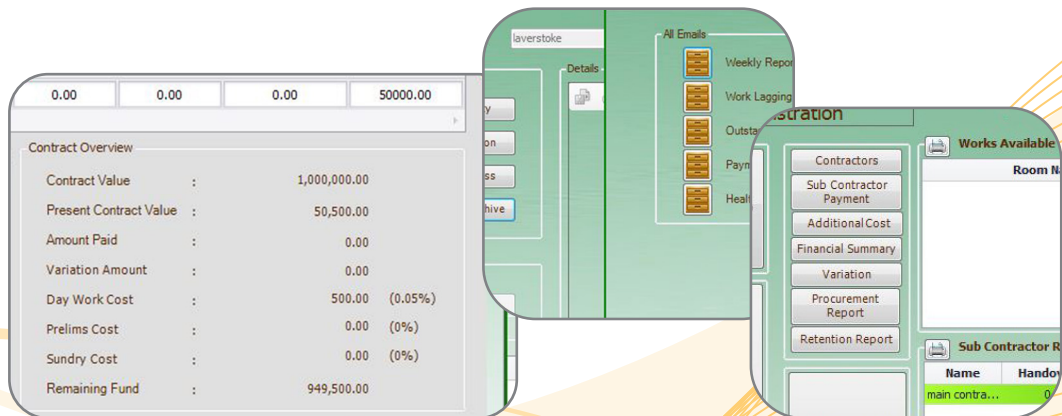


## REPORTING AND CONTRACTUAL ADMINISTRATION

Elevate deals with time consuming documents with ease. Automatically generating all reports, programmes, updates and contractual administration documents. Elevate ensures compliance is achieved smoothly and efficiently.



Additional time is saved with the automated valuations in addition to all other financial variations being automated. Including the unique Cash Flow Forecasts. Just make a few 'clicks' and let Elevate do all those calculations and issue all the associated documentation.



Further time is saved as all these documents are sent automatically to all parties concerned and then are archived within the system to create the perfect audit system for the project.

*"If it's not documented, it doesn't exist. As long as information is retained in someone's head, it is vulnerable to losses"*

**Louis Fried**

# REAL TIME DATA

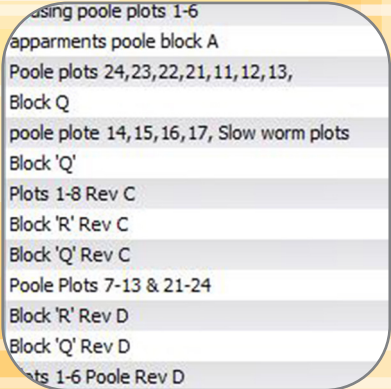
Elevate understands it's a very busy world. Ever wanted to know exactly the status of a contract from anywhere in the world? Or while on the go without having to make those entire costly and time consuming phone calls?

Elevate delivers this with ease, access the server based system, on your tablet, smart phone, laptop or even another work station. Just login, select the project and at a glance see the dash board and know exactly the status of your project in REAL TIME.



# MULTIPLE CONTRACTS

No worries, it's so simple. Log in, select the drop down box, select the contract, 'Click' and instantly re-view the specified contract.

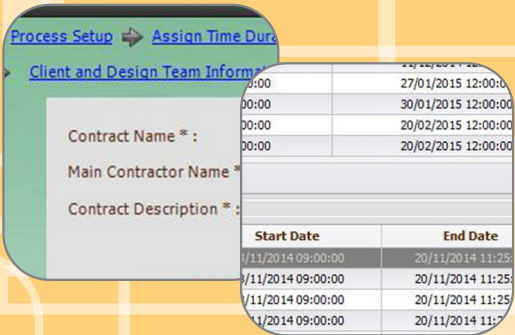


"At times , project managers seem to forget that many of the conventional form, charts and tables that they must fill out are tended to serve as aids, not punishments"  
*Mantel, Meredith, Shafter, & Sutton*

# SET UP

One of the main issues for software within the construction industry is the time systems take to initially set up projects. Not any more, just follow Elevates unique wizzard which guides you through the set-up of the contract.

**CONTRACTS NO LONGER TAKE DAYS TO SET UP. IT NOW TAKE JUST TENS OF MINUTES.**

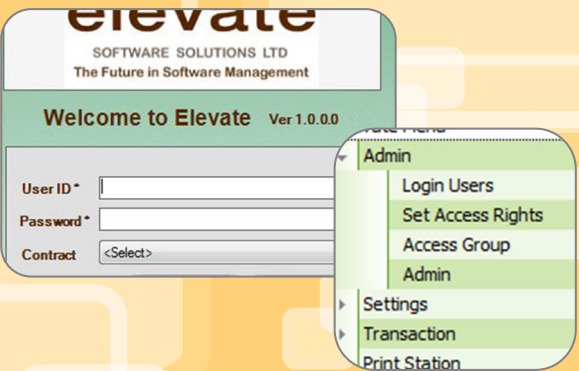


Programmes become a thing of the past, with its unique automatic programme; this enables you to have full working programmes produced within minutes. And in great detail, no need to keep updating them either, Elevate does this automatically too.

# SECURITY

Elevate understands the need for security as the information held is very important and valuable. Elevate has also made this simple too. Just input who you want to give access to, select which parts of the system you wish this person to have access to give a final click and it's done.

**LET PEOPLE SEE WHAT YOU WANT THEM TO SEE; IT'S IN YOUR HANDS, AT THE SIMPLE 'CLICK' OF A BUTTON.**



"A well-constructed project management workshop should give people the solid foundation to build on"  
*Bentley & Borman, 2001*

## ELEVATE AS A TOOL FOR SUCCESS

### ON SOFTWARE QUALITY CONTROL / QUALITY ASSURANCE

"Survey respondent estimated that if 100% of defects were addressed and remediated prior production, they would experience a 33% cost saving."

*M.Ballou, Industry Survey 2008*

### PROJECT MANAGEMENT V'S PROGRAM MANAGEMENT

"Project Management is like juggling three balls-time, cost and quality. Programme management is like a troupe of circus performers standing in a circle each juggling three balls and swapping balls from time to time."

*P.G.Reiss*

### ON LEADERSHIP

"Of all the things I've done, the most vital is co-ordinating the talents of those who work for us and pointing them towards certain goals."

*Walt Disney*

### PROJECTS

"It's always easier to talk about change than make the change."

*Alvin Toffler*

"A Task is not done until it is done."

*Louis Fried*

### RISK MANAGEMENT

"Risk management is all additional costs."

*Steve McGowan*

"It's knowing when the cost of managing the risk outweighs the risk itself."

*Steve McGowan*



## ENVIRONMENT

ELEVATE UNDERSTANDS THAT THE WORLD IS CHANGING, CHANGING FOR THE BETTER AND SUSTAINABILITY AND CARBON FOOT PRINTS HAVE COME TO THE FORE. ELEVATE DELIVERS THESE REQUIREMENTS WITH EASE.

The system is totally paperless, with all documents, audits etc. saved electronically for instant call back. This saves on all the reams of paper and ink which projects can use through the life cycle.

In addition with the system which is based on servers and updated in real time, phone calls, communication and travel costs are kept to a minimum. Meetings can also be reduced or held remotely by all being able to access the dash board.



Meeting minutes become a thing of the past, as Elevate shows in real time direction for all and status to programme. Linked together with Automated Correspondences and weekly or daily in depth status report, the system administers contract obligations with ease.

With the system linking all the different sectors together works are fully completed by all in the correct time scales and quality desired. Removing the need for costly re-visits and the use of additional energy in undertaking and completing these works.



All giving huge savings on administration, travel, communications and works, all helping to further reduce the carbon foot print of the project and overall organization.

**"Don't do anything you don't have to do"**  
*Louis Fried*



## QUOTES & ACCOLADES



"You have Cornered the World Market."

*Bovis Lend Lease - Technical Division, London*

"It's a system ahead of its time, and is the next system after windows."

*J Homola MBA - AJHF Group Chairman and board adviser, Magna Cum Laude USA/BSC, Industrial Engineering South Africa*

"Wow, I have not seen anything like it."

*N.Kilby MBA - MD of MLS, Cranfield Business School UK*

"The only system that inter-links, directs all the different sectors of the industry."

*Editor - Build and Engineer Magazine*

"The system does everything we require."

*A. Fleet -CEO, AC Majors*

"It is certainly the most complete system I have ever seen."

*J.Rowntree - CEO, Vantage Homes*

**SHORT LISTED FOR BEST NEWCOMER TO SHOW @ INTERBUILD NEC**

**2ND EDITORS ARTICLES (D.CHADWICK) IN 'CONSTRUCTION COMPUTING'**

**SHORT LISTED 3 TIMES TO APPEAR ON DRAGON'S DEN, BBC**

## ADDITIONAL BENEFITS



- Minimal training required
- Works for any business where there is a process/ cost/ timescale
- Stand alone system, no need for integration to others if so preferred
- Reduced absenteeism due to stress at the work place
- Increased productivity per capita
- Vast reduction in risk management cost
- Litigation costs reduced
- Insurance costs reduced
- Certitude of drawdown
- Duplication of work eliminated

"If I have seen further than others, it is by standing upon the shoulders of giants"

*Sir Isaac Newton*

Start doing things differently, the stress free way and see -  
*HOW EASY CONSTRUCTION BECOMES*



SATELITE NAVIGATION FOR THE CONSTRUCTION INDUSTRY

*ALL AT THE CLICK OF A BUTTON*



"It's easy to see, hard to foresee"

*Benjamin Franklin*

## ELEVATE AS A TOOL FOR SUCCESS

### ON SOFTWARE QUALITY CONTROL / QUALITY ASSURANCE

"Survey respondent estimated that if 100% of defects were addressed and remediated prior production, they would experience a 33% cost saving."

*M.Ballou, Industry Survey 2008*

### PROJECT MANAGEMENT V'S PROGRAM MANAGEMENT

"Project Management is like juggling three balls-time, cost and quality. Programme management is like a troupe of circus performers standing in a circle each juggling three balls and swapping balls from time to time."

*P.G.Reiss*

### ON LEADERSHIP

"Of all the things I've done, the most vital is co-ordinating the talents of those who work for us and pointing them towards certain goals."

*Walt Disney*

### PROJECTS

"It's always easier to talk about change than make the change."

*Alvin Toffler*

"A Task is not done until it is done."

*Louis Fried*

### RISK MANAGEMENT

"Risk management is all additional costs."

*Steve McGowan*

"It's knowing when the cost of managing the risk outweighs the risk itself."

*Steve McGowan*





**Elevate | Steve McGowan**

Mobile: 07824 724377 | Phone: 01962 761693

Email: [steve@elevate-software.co.uk](mailto:steve@elevate-software.co.uk) | [www.elevate-software.com](http://www.elevate-software.com)

5 Sutton Park Road, Winchester, Hampshire, SO21 3GZ

Patent Pending 11150009.1 | Copyright © 2015 Steve McGowan. All Rights Reserved.